

ALZADO NORESTE



ALZADO NOROESTE



ALZADO SUROESTE



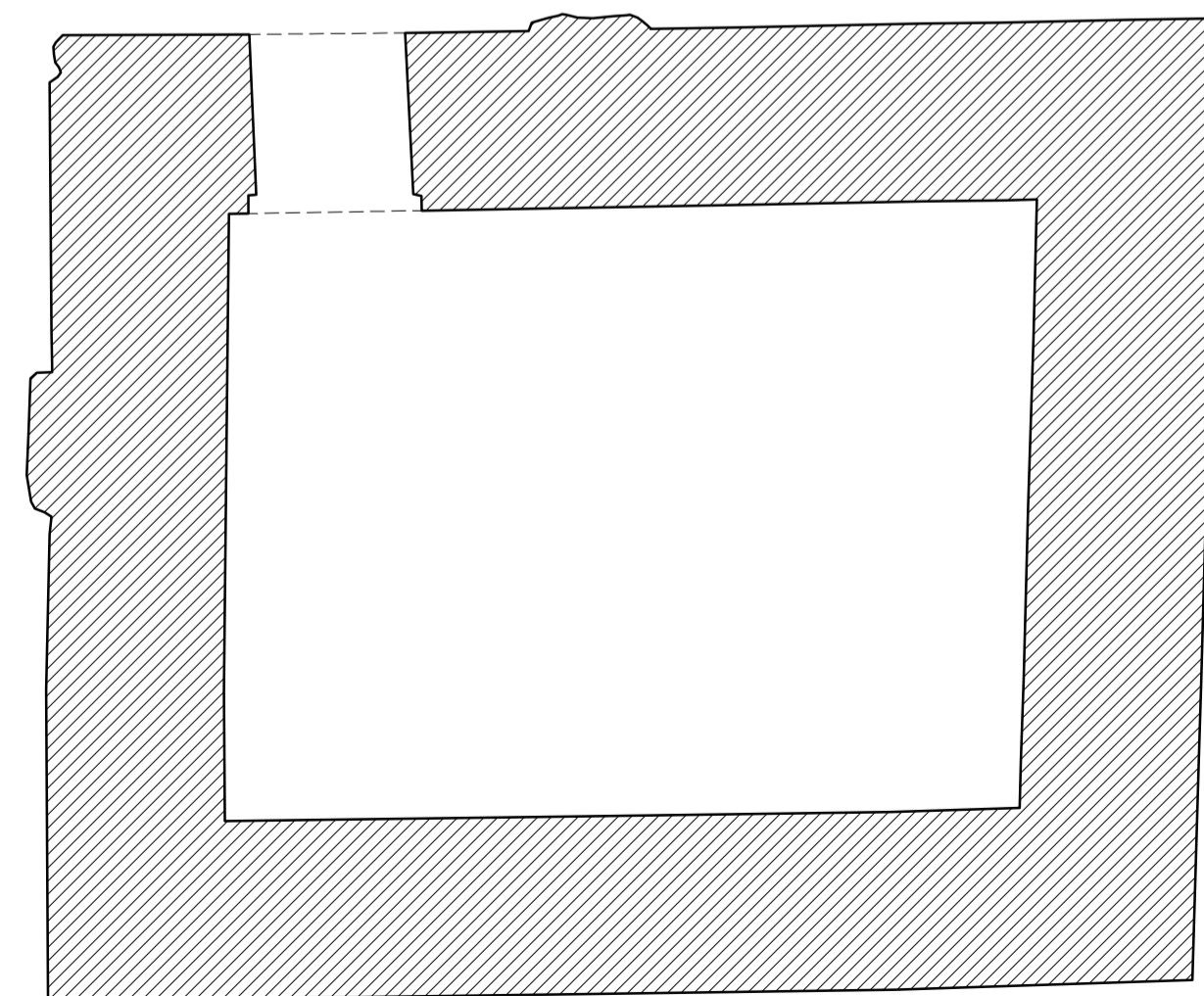
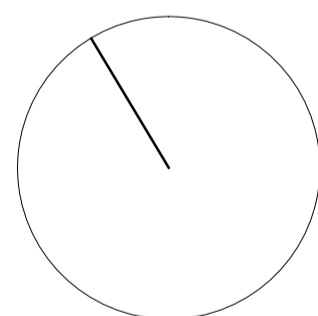
ALZADO SURESTE



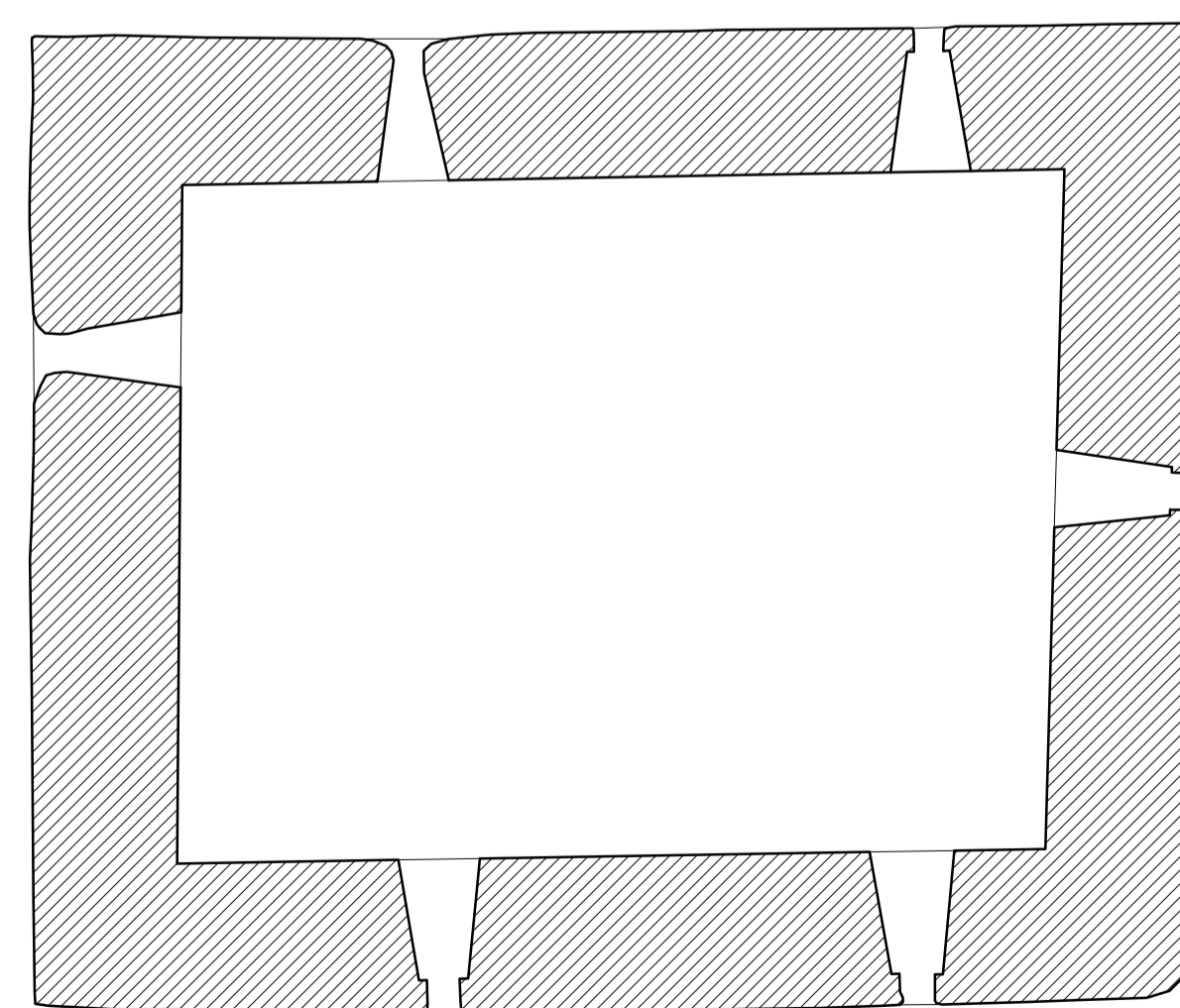
TORRE DE SAN ANTONIO. OLIVARES

A. ALMAGRO / arq. RABASF

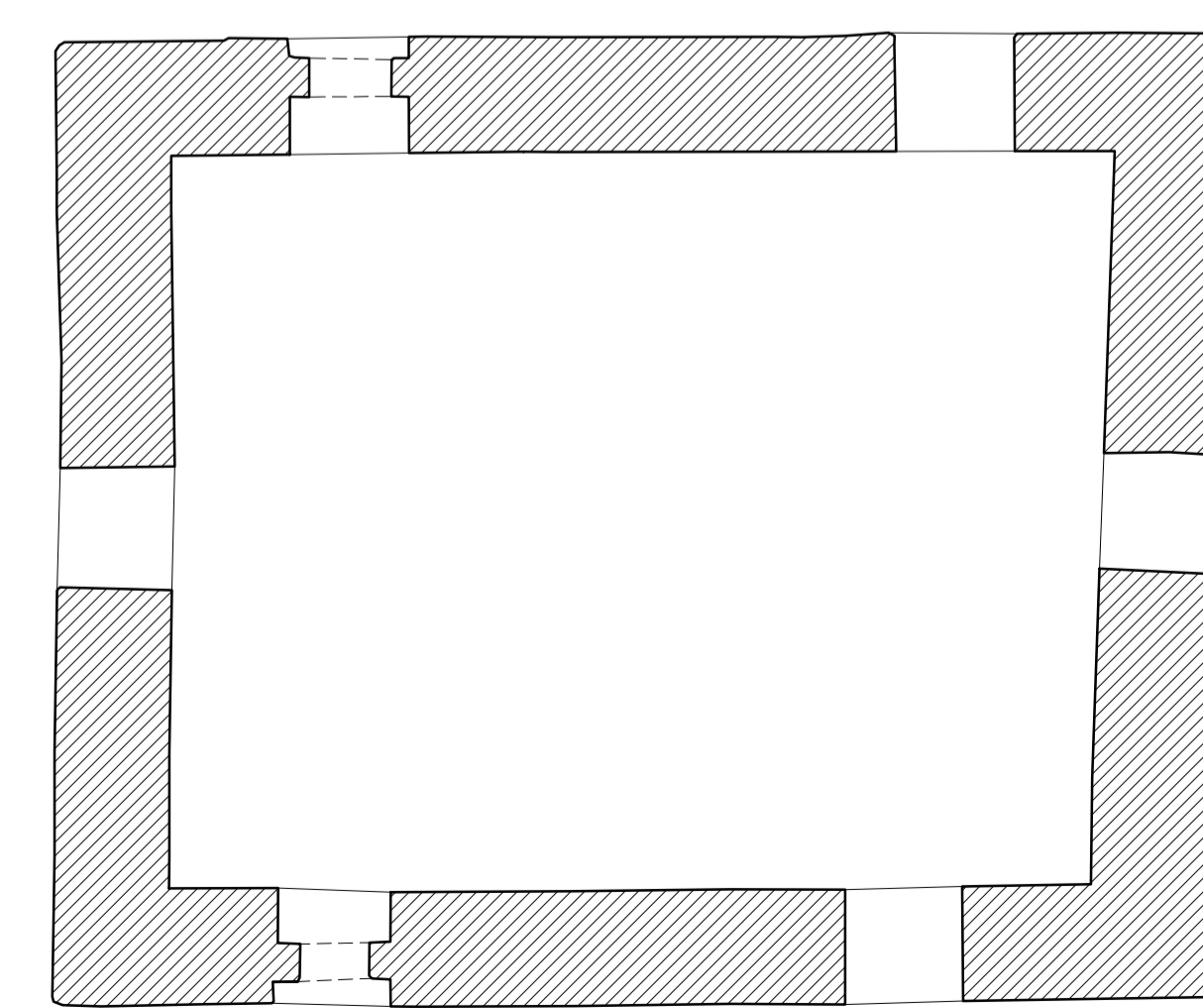
JUNIO 2024



PLANTA BAJA



PLANTA PRIMERA



PLANTA SEGUNDA